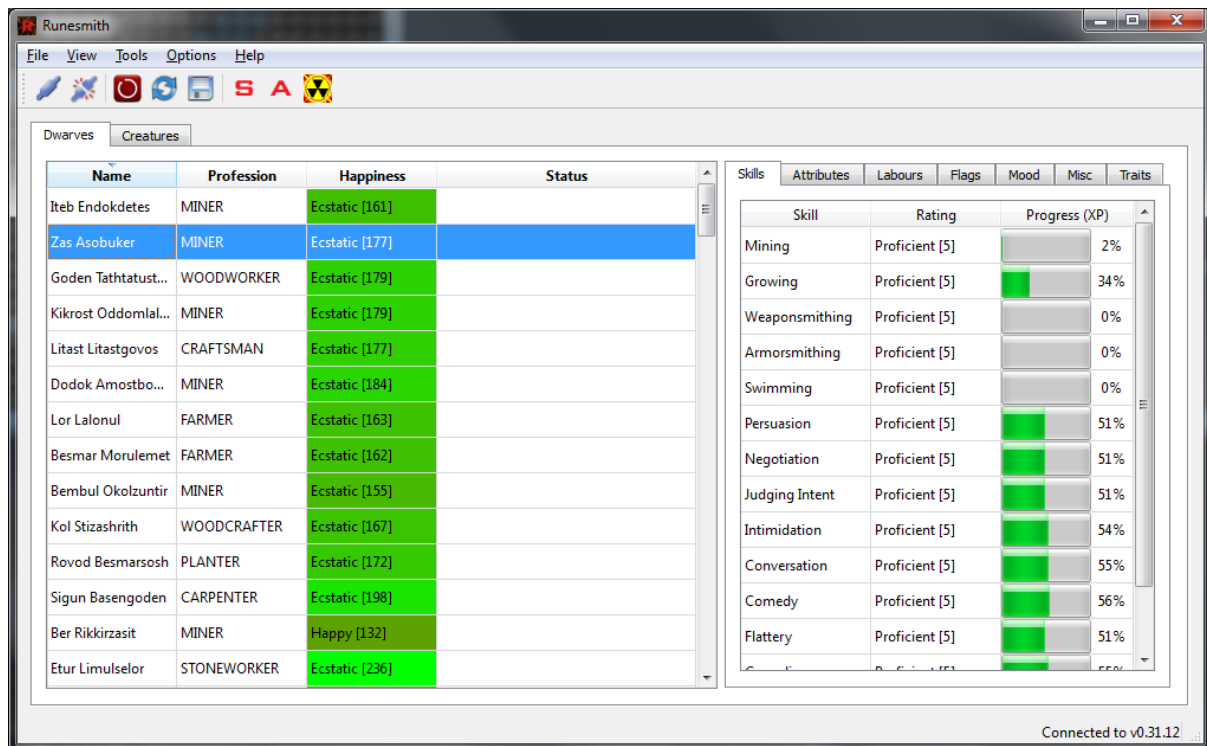


# Runesmith: Quick Use Guide



## Icon description (from left to right):

- Connect to DF
- Disconnect from DF
- Force Resume DF if it stops responding (freezes)
- Refresh data (re-read all creatures from DF)
- Write changes to DF
- Set all "Main Race" (Dwarves by default) skills to user defined value
- Same as above but for attributes
- Genocide - kill all creatures of the same race as the currently selected. Does not work on main race

## Additional Features:

- Under the tools menu, the option to export all Dwarves (main race) to either XML or CSV can be found. This will write a CSV or XML containing a set of user chosen stats to be exported

## Editing:

The majority of things, if editable, can be edited by double click on their respective cells. This will bring up the editor associated with that field, whether it be a text input editor or a drop down combo box. The exceptions to this are adding traits or adding/removing labours which is achieved through means of a button.

When editing a field which uses a drop down combo box as it's editor, be sure to click off the combo box before changing views to ensure that the change is saved correctly.